

we can help.

**Family Crisis Network**

419.586.1133

**Victim Assistance**

(M-F 8:30am - 4:00pm)

419.586.8677

**Mercer County Job and Family  
Services**

419.586.5106

**Foundations Behavioral Health Services**

419.584.1000

**Mercer County Sheriff's Department**

419.586.7724

**Rape Crisis Hotline**

1-87-STOP RAPE (877.867.7273)

**National Sexual Assault Hotline**

800-656-HOPE

**Ohio Domestic Violence Network**

800.934.9840

[www.odvn.org](http://www.odvn.org)

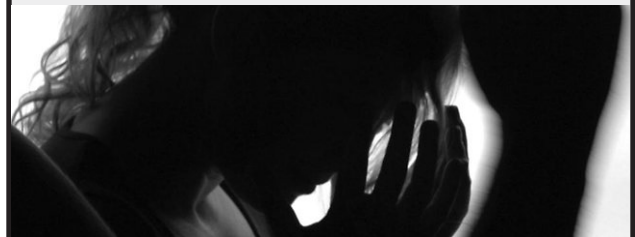
**Ohio Sexual Violence Helpline**

1-844-OHIO-HELP

(1-844-644-6435)

sexual  
**assault**  
& intimate partner  
**violence**

*Are you a victim?*



**KNOW**

IT'S NOT OKAY.



**Mercer Health**

800 W. Main Street  
Coldwater, Ohio 45828

419.678.2341

[www.mercer-health.com](http://www.mercer-health.com)

you should know

## what is **Intimate Partner Violence?**

A pattern of behavior which involves violence or other abuse by one person in a domestic context. Domestic Violence is a serious social problem and crime that affects all classes, races and age groups. Domestic Violence is a term used to describe many types of abuse including partner abuse, child abuse and abuse of the elderly. These crimes, according to the FBI, are the least reported.

you should know

There is no justification for violence. **NO ONE** deserves to be abused.

Domestic violence is a **CRIME**.

You or your insurance company are not be required to pay for a **SANE** (sexual assault nurse examination) medical examination.

- ✓ Plan escape route
- ✓ Know Emergency Hotline numbers
- ✓ Keep important papers in a safe location (social security cards, birth certificates, medical cards, bank books, licenses)
- ✓ Hide extra house/car keys
- ✓ Keep change of clothing handy

## what is **Sexual Assault?**

Sexual assault is any involuntary sexual act in which a person is coerced or physically forced to engage against their will, or any non-consensual sexual touching of a person. Sexual assault is a form of sexual violence, and it includes rape (such as forced vaginal, anal or oral penetration or drug facilitated sexual assault), groping, forced kissing, child sexual abuse, or the torture of the person in a sexual manner.

if you are a victim

- ✓ Get Away
- ✓ Call for Help
- ✓ Cooperate with Law Enforcement Officials
- ✓ Seek Medical Treatment if needed
- ✓ Report abuse
- ✓ Talk with a counselor or Family Crisis Network